

Client



Source



Marjoram (*Origanum majorana*)
27148R

Sample

Marjoram (*Origanum majorana*)

Batch #:..... 27148R

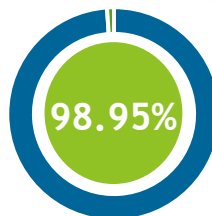
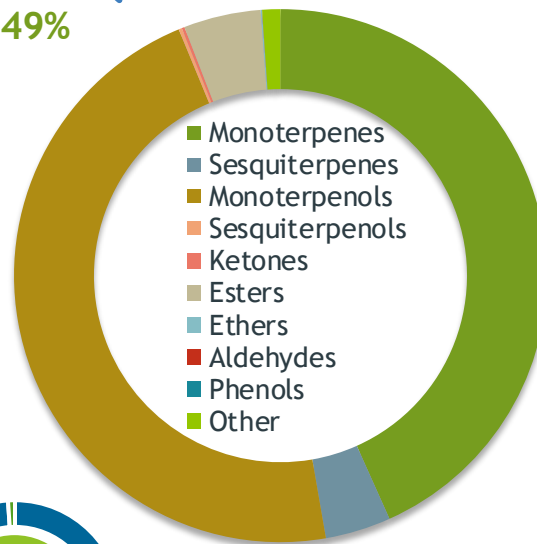
Type:..... Essential Oil

CAS Number:... 8016-33-9

American College of Healthcare Science

Monoterpenols

46.49%



Percentage Identified

Client



Website



Primary

25.32%

Terpinen-4-ol

13.59%

gamma-Terpinene

10.16%

cis-Sabinene hydrate

Result



Conclusion

No adulterants, Diluents, or contaminants were detected via this method. This oil meets the expected profile for genuine Essential Oil of Marjoram (*Origanum majorana*)

RI @20C =1.474 SG @22.5C = .901

Internal Number: | EVS-3476



Essential Validation Services

747 SW 2nd Ave IMB 12 Suite 306
Gainesville, FL 32601

317.361.5044 |

<https://essentialvalidationservices.com/>

adam@essentialvalidationservices.com

Monoterpenes	43.29%	43.29%
Sesquiterpenes	3	3.98%
Monoterpenols	46.49%	46.49%
Sesquiterpenols		0.20%
Ketones		0.17%
Esters	4	4.68%
Ethers		0.08%
Aldehydes		0.01%
Phenols		0.00%
Other		1.10%

- Essential Oil testing is performed by using qualitative GC-MS. Method: SOP.T.01 Client Method
 - This report may not be published without the consent of Essential Validation Services.
 - Chromatograph image may be requested
 - This report is valid for 1 year from the analyzed date

Client



Source

Marjoram (*Origanum majorana*)

27148R

Total Percentage		98.95%		
Number	RT	Area %	Compound Name	Chemical Family
1	4.01	0.02%	Ethyl 2-methylbutyrate	Aliphatic Ester
2	5.96	0.01%	(E)-2-Hexenal	Aliphatic Aldehyde
3	6.03	0.01%	cis-Hex-3-en-1-ol	Aliphatic Alcohol
4	8.19	0.01%	Hashishene	Monoterpene
5	8.44	1.16%	alpha-Thujene	Monoterpene
6	8.71	0.70%	alpha-Pinene	Monoterpene
7	9.34	0.03%	Camphene	Monoterpene
8	10.32	6.88%	Sabinene	Monoterpene
9	10.48	0.39%	beta-Pinene	Monoterpene
10	10.68	0.01%	1-Octen-3-ol	Aliphatic Alcohol
11	10.88	0.03%	Octan-3-one	Aliphatic Ketone
12	11.06	1.61%	Myrcene	Monoterpene
13	11.41	0.01%	3-Octanol	Aliphatic Alcohol
14	11.63	0.05%	Pseudolimonene	Monoterpene
15	11.74	0.79%	alpha-Phellandrene	Monoterpene
16	12.23	8.78%	alpha-Terpinene	Monoterpene
17	12.55	1.98%	para-Cymene	Monoterpene
18	12.81	4.18%	beta-Phellandrene	Monoterpene
19	13.14	0.02%	(Z)-beta-Ocimene	Monoterpene
20	13.61	0.04%	(E)-beta-Ocimene	Monoterpene
21	14.13	13.59%	gamma-Terpinene	Monoterpene
22	14.62	2.93%	trans-Sabinene hydrate	Monoterpenol
23	15.35	3.04%	Terpinolene	Monoterpene
24	15.54	0.03%	para-Cymenene	Monoterpene
25	16.07	10.16%	cis-Sabinene hydrate	Monoterpenol
26	16.59	0.02%	1,3,8-para-Menthatriene	Monoterpene
27	17.12	1.59%	cis-para-Menth-2-en-1-ol	Monoterpenol
28	17.84	0.06%	alpha-Pinocarveol	Monoterpenol
29	17.96	1.05%	trans-para-Menth-2-en-1-ol	Monoterpenol
30	18.68	0.01%	trans-Limonene oxide	Monoterpene Ether
31	19.31	0.05%	Borneol	Monoterpenol
32	19.81	25.32%	Terpinen-4-ol	Monoterpenol
33	20.04	0.06%	para-Cymen-8-ol	Monoterpenol
34	20.43	3.98%	alpha-Terpineol	Monoterpenol
35	20.51	0.49%	cis-Piperitol	Monoterpenol

ESSENTIAL VALIDATION SERVICES | 747 SW 2ND AVE GAINESVILLE, FLORIDA 32601 | 317-361-5044

- Essential Oil testing is performed by using qualitative GC-MS. Method: SOP.T.01 Client Method
 - This report may not be published without the consent of Essential Validation Services.
 - Chromatograph image may be requested
 - This report is valid for 1 year from the analyzed date

Client



Source



Marjoram (*Origanum majorana*)
27148R

Number	RT	Area %	Compound Name	Chemical Family
36	20.804	0.07%	trans-Dihydrocarvone	Monoterpenol
37	21.07	0.56%	trans-Piperitol	Monoterpenol
38	21.44	0.07%	gamma-Terpineol	Monoterpenol
39	21.81	0.02%	Nerol	Monoterpenol
40	21.95	0.11%	Citronellol	Monoterpenol
41	22.60	0.07%	Carvone	Monoterpene Ketone
42	22.85	0.01%	cis-Carveol	Monoterpenol
43	23.01	3.82%	Linalyl acetate	Monoterpene Ester
44	24.05	0.02%	Citronellyl formate	Monoterpene Ester
45	24.47	0.06%	Bornyl acetate	Monoterpene Ester
46	25.02	0.63%	Terpinen-4-yl acetate	Monoterpene Ester
47	25.17	0.03%	Carvacrol	Monoterpenol
48	25.35	0.01%	Tridecane	Alkane
49	26.59	0.35%	delta-Elemene	Sesquiterpene
50	27.22	0.02%	alpha-Terpinyl acetate	Monoterpene Ester
51	27.80	0.04%	Neryl acetate	Monoterpene Ester
52	28.65	0.07%	Geranyl acetate	Monoterpene Ester
53	29.06	0.01%	beta-Elemene	Sesquiterpene
54	29.78	0.01%	alpha-Gurjunene	Sesquiterpene
55	30.27	2.58%	beta-Caryophyllene	Sesquiterpene
56	30.85	0.01%	beta-Gurjunene	Sesquiterpene
57	31.05	0.06%	Aromadendrene	Sesquiterpene
58	31.73	0.10%	alpha-Humulene	Sesquiterpene
59	32.46	0.01%	gamma-Gurjunene	Sesquiterpene
60	33.09	0.03%	beta-Guaiene	Sesquiterpene
61	33.23	0.10%	Viridiflorene	Sesquiterpene
62	33.40	0.68%	Bicyclogermacrene	Sesquiterpene
63	33.88	0.02%	(E,E)-alpha-Farnesene	Sesquiterpene
64	34.35	0.02%	delta-Cadinene	Sesquiterpene
65	36.55	0.08%	Spathulenol	Sesquiterpenol
66	36.73	0.07%	Caryophyllene oxide	Sesquiterpene Ether
67	37.22	0.02%	Viridiflorol	Sesquiterpenol
68	38.28	0.03%	10-epi-gamma-Eudesmol	Sesquiterpenol
69	38.71	0.07%	Isospathulenol	Sesquiterpenol

ESSENTIAL VALIDATION SERVICES | 747 SW 2ND AVE GAINESVILLE, FLORIDA 32601 | 317-361-5044

- Essential Oil testing is performed by using qualitative GC-MS. Method: SOP.T.01 Client Method
 - This report may not be published without the consent of Essential Validation Services.
 - Chromatograph image may be requested
 - This report is valid for 1 year from the analyzed date

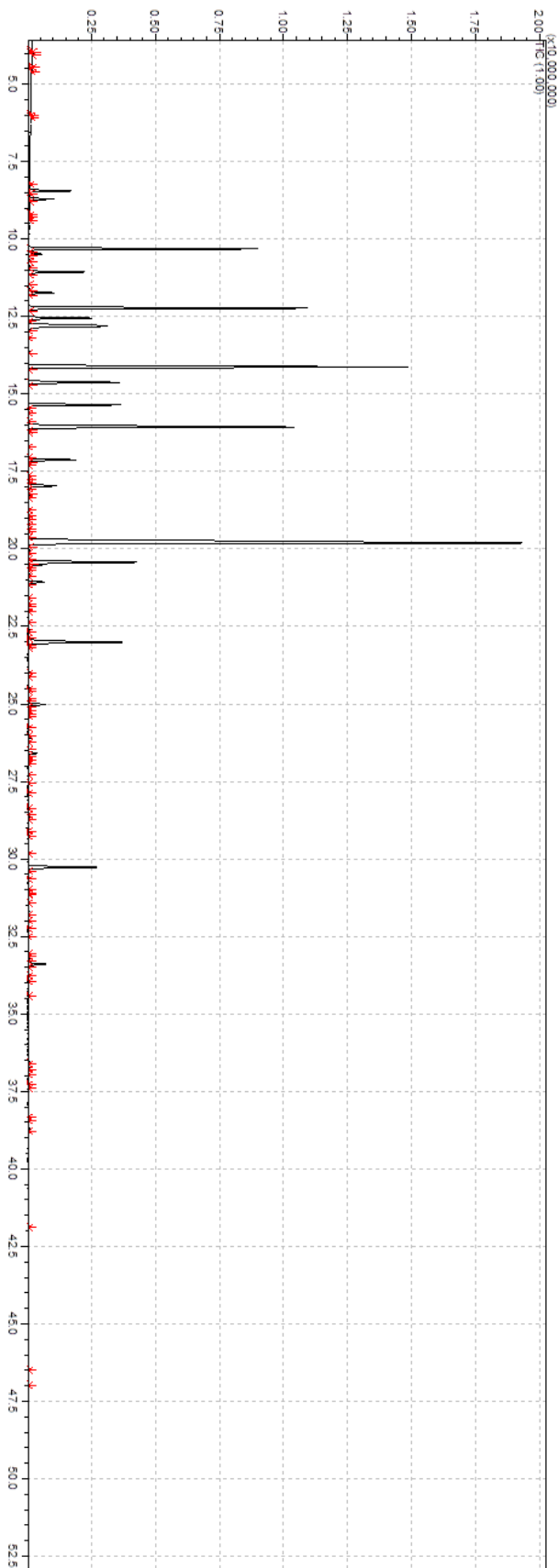
Client



Source



Marjoram (*Origanum majorana*)
27148R



- Essential Oil testing is performed by using qualitative GC-MS. Method: SOP.T.01 Client Method
- This report may not be published without the consent of Essential Validation Services.
- Chromatograph image may be requested
- This report is valid for 1 year from the analyzed date



Purity Laboratories, Inc.

17387 SW 63rd St.
Lake Oswego, OR 97035
Phone: 503.297.3636 Fax: 503.297.3738

www.puritylabsinc.com

Page 1 of 1

For: American College of Healthcare Sciences
5940 SW Hood ave
Portland, Oregon, 97239
United States
(971) 703-5064

Case#: 1912050

Received Date: 12/04/2019

Tested Date: 12/16/2019

ATTN: Natalya Shepeleva
natalyashepeleva@achs.edu
(971) 703-5064

Completed Date: 12/19/2019

Purchase Order:

Case Notes:

Sample#: 1912050-01		Sample Description: Majoram essential oil Lot# 27148R	
Test	Unit	Result	Method
AMPA	ppb	None Detected (< 200)	HPLC
Glyphosate	ppb	None Detected (< 230)	HPLC
Multiresidue Pesticide Screen	pass / fail	Pass	AOAC 2007.1, European EN 15662 Method

Reviewed By


Joshua Wyman
Quality Assurance
Manager

Date

12/26/19

Amended Report