

Client



Source



Cinnamon Bark (*Cinnamomum zeylanicum*)  
41147R

Sample

Cinnamon Bark (*Cinnamomum zeylanicum*)

Batch #:..... 41147R

Type:..... Essential Oil

CAS Number:... 8015-91-6

American College of Of Health Care Sciences

Client



Website



Primary

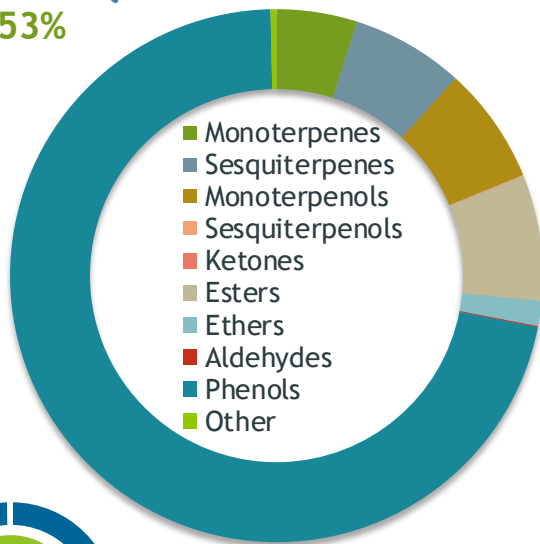
65.97% | (E)-Cinnamaldehyde

6.79% | Linalool

6.15% | beta-Caryophyllene

### Phenols

71.53%



99.72%

### Percentage Identified

Result



Conclusion

No adulterants, Diluents, or contaminants were detected via this method. This oil meets the expected profile for genuine Essential Oil of Cinnamon Bark (*Cinnamomum zeylanicum*)

RI@20C = >1.57 | SG@22.5C = 1.026  
Internal Number: | EVS-3479



### Essential Validation Services

747 SW 2nd Ave IMB 12 Suite 306  
Gainesville, FL 32601

317.361.5044 | <https://essentialvalidationservices.com/>  
adam@essentialvalidationservices.com

Monoterpenes	4	4.90%
Sesquiterpenes	6	6.84%
Monoterpenols	7	7.10%
Sesquiterpenols		0.07%
Ketones		0.01%
Esters	7	7.61%
Ethers		1.51%
Aldehydes		0.07%
Phenols	71.53%	71.53%
Other		0.36%

ESSENTIAL VALIDATION SERVICES | 747 SW 2<sup>ND</sup> AVE GAINESVILLE, FLORIDA 32601 | 317-361-5044

Client



Source

Cinnamon Bark (*Cinnamomum zeylanicum*)

41147R

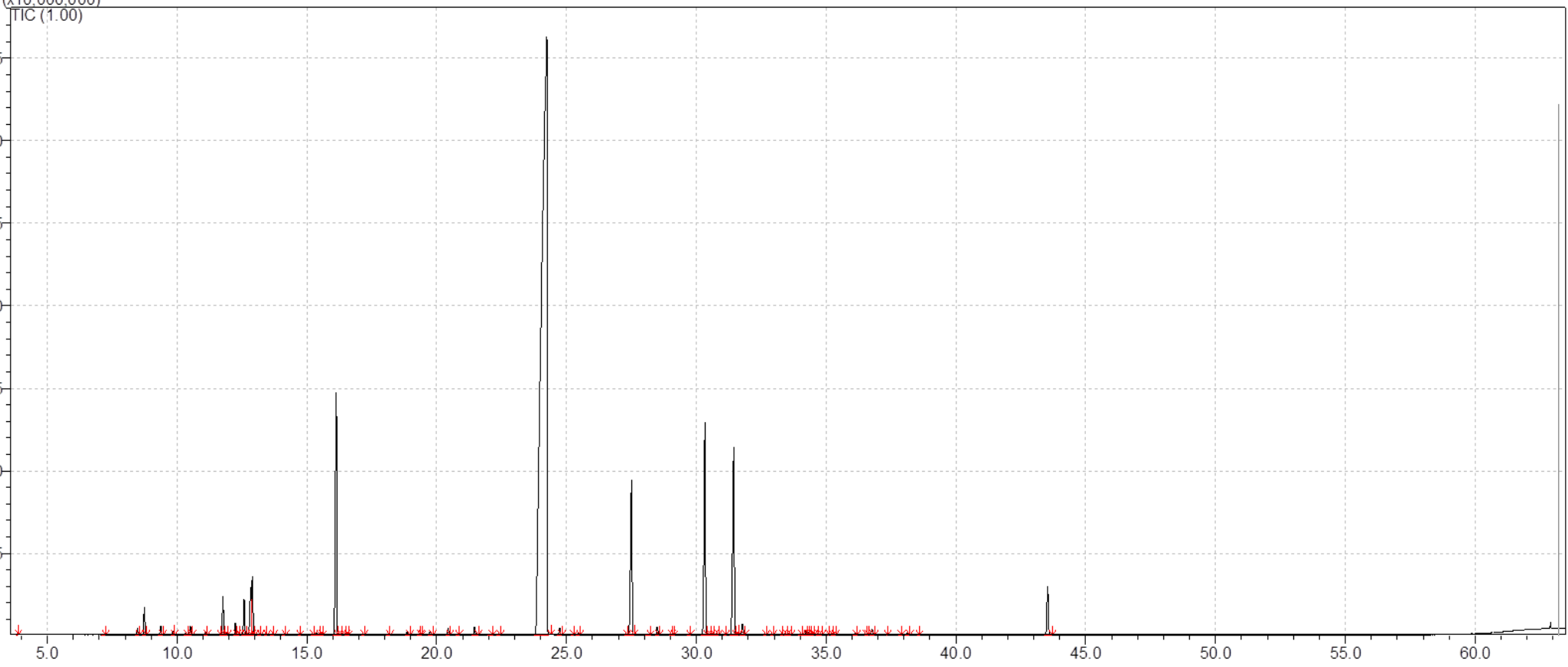
Total Percentage		99.72%		
Number	RT	Area %	Compound Name	Chemical Family
1	7.18	0.01%	Styrene	Phenylpropanoid
2	8.49	0.14%	alpha-Thujene	Monoterpene
3	8.75	0.62%	alpha-Pinene	Monoterpene
4	9.38	0.22%	Camphene	Monoterpene
5	9.85	0.08%	Benzaldehyde	Simple Phenolic
6	10.35	0.05%	Sabinene	Monoterpene
7	10.53	0.20%	beta-Pinene	Monoterpene
8	11.11	0.07%	Myrcene	Monoterpene
9	11.78	0.85%	alpha-Phellandrene	Monoterpene
10	11.89	0.05%	delta-3-Carene	Monoterpene
11	12.26	0.27%	alpha-Terpinene	Monoterpene
12	12.39	0.02%	meta-Cymene	Monoterpene
13	12.60	0.82%	para-Cymene	Monoterpene
14	12.85	1.41%	beta-Phellandrene	Monoterpene
15	12.86	Co-Eluting	Limonene	Monoterpene
16	12.91	1.31%	1,8-Cineole	Monoterpene Ether
17	13.18	0.03%	(Z)-beta-Ocimene	Monoterpene
18	13.65	0.03%	(E)-beta-Ocimene	Monoterpene
19	14.14	0.03%	gamma-Terpinene	Monoterpene
20	14.72	0.01%	cis-Linalool oxide (5) (furanoid)	Monoterpenol
21	15.39	0.08%	Terpinolene	Monoterpene
22	15.59	0.01%	para-Cymenene	Monoterpene
23	16.14	6.79%	Linalool	Monoterpenol
24	17.18	0.01%	cis-para-Menth-2-en-1-ol	Monoterpenol
25	18.16	0.01%	Camphor	Monoterpene Ketone
26	18.87	0.09%	Hydrocinnamaldehyde	Phenylpropanoid
27	19.35	0.01%	Borneol	Monoterpenol
28	19.77	0.09%	Terpinen-4-ol	Monoterpenol
29	20.46	0.18%	alpha-Terpineol	Monoterpenol
30	21.48	0.22%	(Z)-Cinnamaldehyde	Phenylpropanoid
31	22.04	0.04%	Hydrocinnamyl alcohol	Phenylpropanoid
32	22.39	0.03%	ortho-Anisaldehyde	Simple Phenolic
33	24.23	65.97%	(E)-Cinnamaldehyde	Phenylpropanoid
34	24.75	0.18%	Safrole	Phenylpropanoid
35	25.25	0.01%	Carvacrol	Monoterpenol

ESSENTIAL VALIDATION SERVICES | 747 SW 2<sup>ND</sup> AVE GAINESVILLE, FLORIDA 32601 | 317-361-5044

- Essential Oil testing is performed by using qualitative GC-MS. Method: SOP.T.01 Client Method  
 - SG: SOP.T.02 Client Method @22.5C RI: SOP.T.03 Client Method - ND @20C  
 - This report may not be published without the consent of Essential Validation Services.  
 - Chromatograph image may be requested  
 - This report is valid for 1 year from the analyzed date



(x10,000,000)  
TIC (1.00)





Purity Laboratories, Inc.

17387 SW 63rd St.  
Lake Oswego, OR 97035  
Phone: 503.297.3636 Fax: 503.297.3738

www.puritylabsinc.com

Page 1 of 1

For: American College of Healthcare Sciences  
5940 SW Hood ave  
Portland, Oregon, 97239  
United States  
(971) 703-5064

Case#: 1912196

Received Date: 12/17/2019

Tested Date: 12/19/2019

ATTN: Natalya Shepeleva  
natalyashepeleva@achs.edu  
(971) 703-5064/

Completed Date: 12/23/2019

Purchase Order:

Case Notes:

<b>Sample#:</b> 41147R		<b>Sample Description:</b> Cinnamon bark essential oil Lot# 41147R	
<b>Test</b>	<b>Unit</b>	<b>Result</b>	<b>Method</b>
AMPA	ppb	None Detected (< 170)	HPLC
Glyphosate	ppb	None Detected (< 200)	HPLC
Multiresidue Pesticide Screen	pass / fail	Pass	AOAC 2007.1, European EN 15662 Method

Reviewed By \_\_\_\_\_

  
Joshua Wyman  
Quality Assurance  
Manager

Date \_\_\_\_\_

12/20/19

# Test Report