

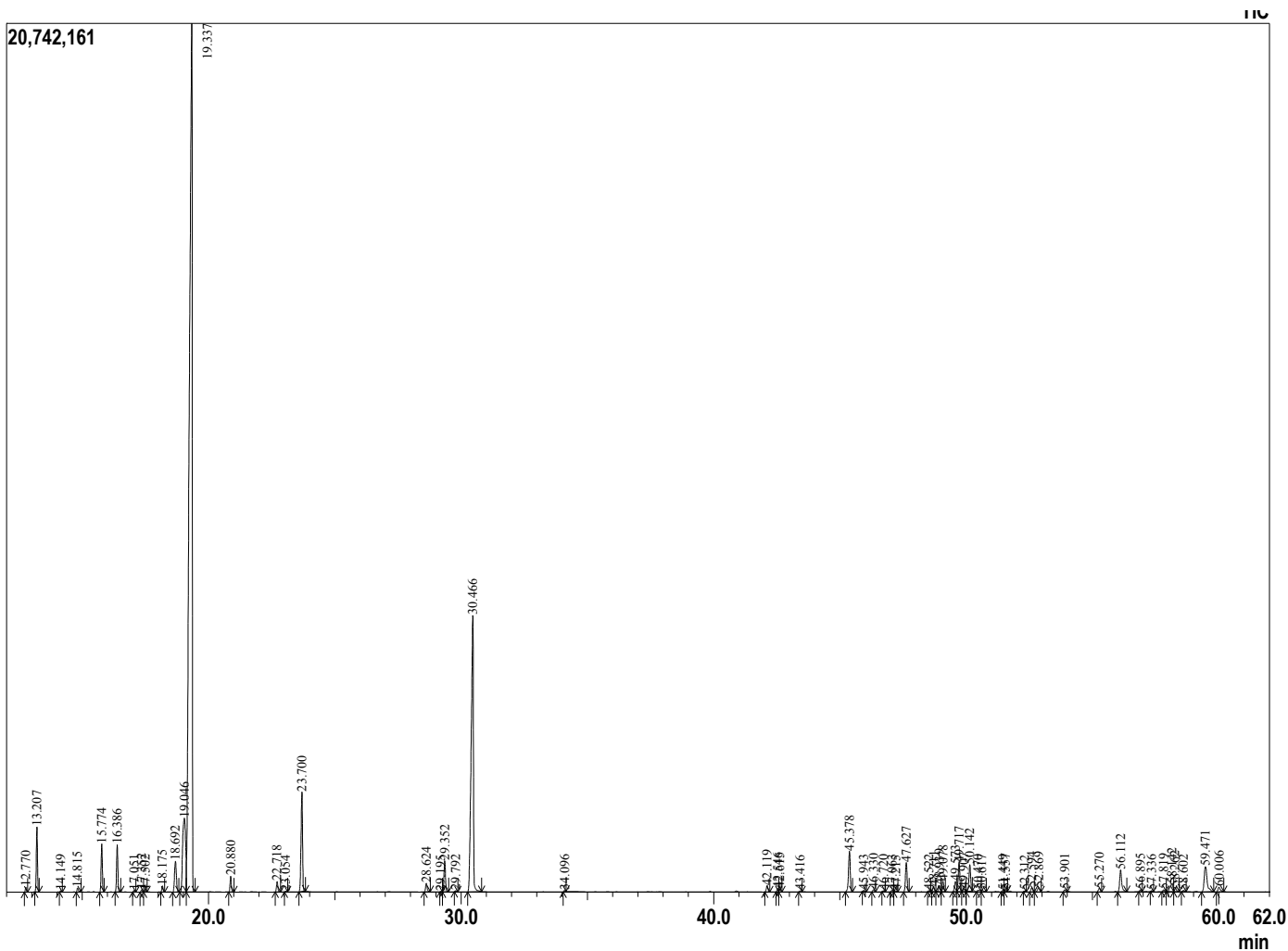
Analyzed by : Dr. Prabodh Satyal
 Analyzed : 9/25/2018 2:03:07 AM
 Sample Type : Essential Oil
 Sample Name : Cajeput
 Lot# : MD36798ORG
 Injection Volume : 0.20

Sample Information



Peak Report TIC

R.Time	Name	Area%
12.770	Thujene <alpha>	0.12
13.207	Pinene <alpha>	1.69
14.149	Camphene	0.03
14.815	Benzaldehyde	0.13
15.774	Pinene <beta>	1.33
16.386	Myrcene	1.34
17.051	Decane<n>	0.04
17.352	Pseudolimonene	0.07
17.502	Phellandrene <alpha>	0.05
18.175	Terpinene <alpha>	0.19
18.692	Cymene<para>	1.32
19.046	Limonene	5.13
19.337	1,8-cineole	56.74
20.880	Terpinene <gamma>	0.47
22.718	Terpinolene	0.34
23.054	Cymenene <para>	0.02
23.700	Linalool	3.44
28.624	Terpineol <delta>	0.31
29.195	1,8-menthadien-4-ol <para>	0.01
29.352	Terpinen-4-ol	1.06
29.792	Cymen-8-ol<para>	0.03
30.466	Terpineol <alpha>	14.43
34.096	Geraniol	0.03
42.119	Ylangene<alpha>	0.23
42.546	Copaene <alpha>	0.11
42.615	Geranyl acetate	0.10
43.416	Elemene <beta>	0.03
45.378	Caryophyllene <trans>	1.62
45.943	Elemene <gamma>	0.04
46.330	Guaiene <alpha>	0.07
46.720	Guaiadiene<6,9>	0.03
47.063	Gurjunene-beta(Calarene)	0.05
47.215	Aromadendrene	0.04
47.627	Humulene <alpha>	1.10
48.522	Aristolochene<4,5-diepi>	0.03
48.711	Selina-4,11-diene	0.17
48.939	Gurjunene <gamma>	0.25
49.078	Amorphene <alpha>	0.39
49.573	Selinene <delta>	0.43
49.717	Selinene <beta>	1.11
49.907	Amorphene <gamma>	0.10
50.142	Selinene <alpha>	1.00
50.470	Bulnesene <alpha>	0.11
50.617	Guaiene<trans-beta>	0.08
51.449	Cadinene <delta>	0.05
51.557	Panasinsen <(-)-.alpha>	0.06
52.312	Zonarene	0.02
52.594	Guai-3,9-diene	0.16
52.869	Selina-3,7(11)-diene	0.20
53.901	Germacrene B	0.07
55.270	Caryophyllene oxide	0.14
56.112	Guaiol	1.03
56.895	Humulene epoxide II	0.06
57.336	Intermedeol isomer	0.02
57.819	Selina-6-en-4-ol	0.08
58.142	gamma-Eudesmol	0.52
58.262	Cubeno<1-epi>	0.22
58.602	Hinesol	0.05
59.471	Eudesmol<beta>	1.67
60.006	Bulnesol	0.23
		100.00



Comments:
 The analysis of this Cajeput batch sample meets the expected chemical profile of authentic essential oil of Melaleuca leucadendra.

Copyright © 2018 by Aromatic Plant Research Center (APRC). All rights reserved. The information contained in this document may not be used, published or redistributed, including online, without the prior written consent of APRC.

Reviewed by: Ambika Poudel