

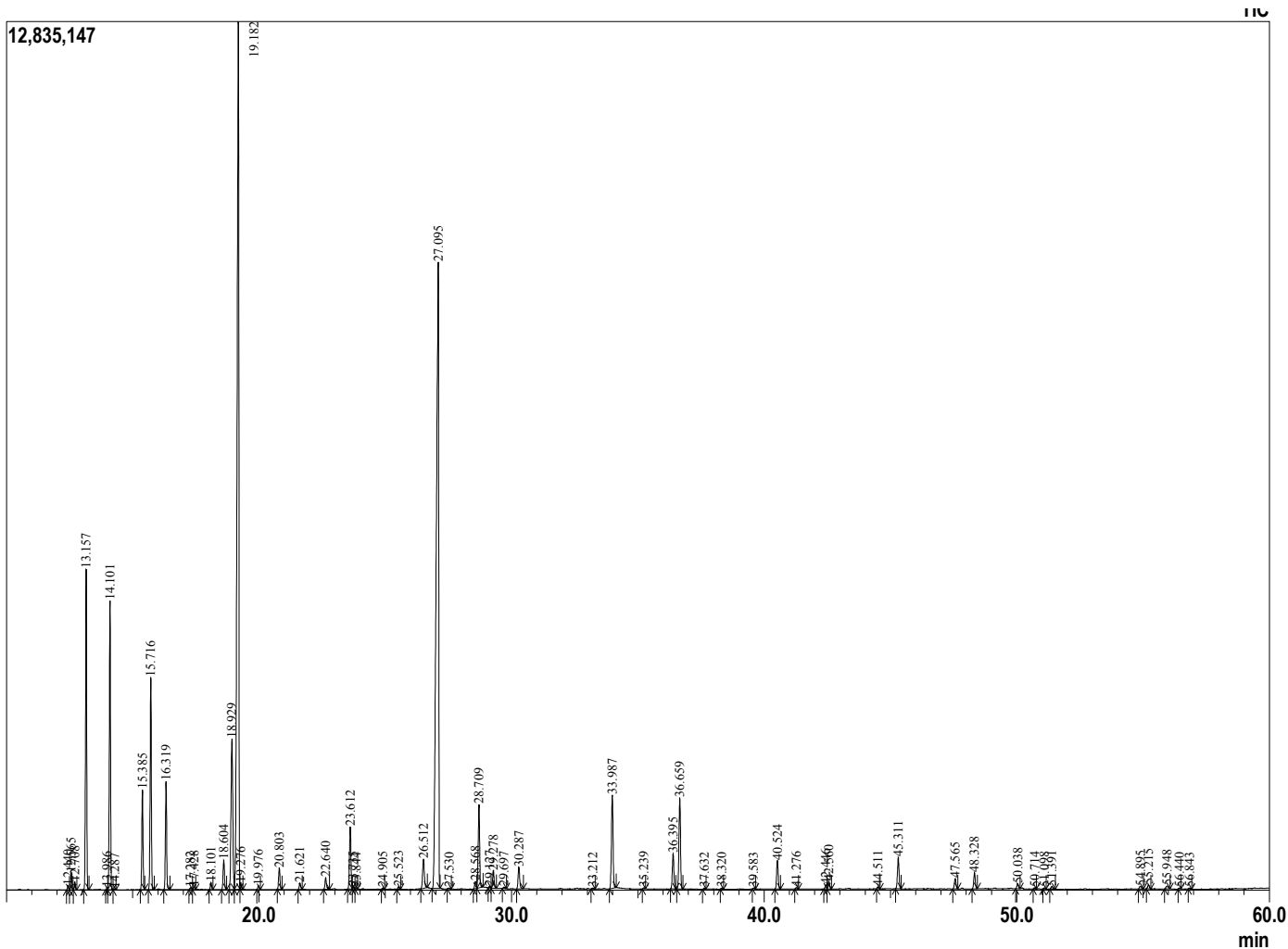
Analyzed by : Dr. Prabodh Satyal :
Analyzed : 10/12/2018 9:45:33 AM
Sample Type : Essential Oil
Sample Name : Spanish Sage
Lot# : ACH181012A. ACHS lot 32096C
Injection Volume : 0.10

Sample Information



Peak Report TIC

R.Time	Name	Area%
12.440	Pinene isomer	0.09
12.565	Tricyclene	0.31
12.708	Thujene<alpha->	0.16
13.157	Pinene<alpha->	6.61
13.986	Fenchene <alpha->	0.03
14.101	Camphene	6.05
14.287	Thuja-2,4(10)-diene	0.02
15.385	Sabinene	2.11
15.716	Pinene<beta->	4.51
16.319	Myrcene	2.35
17.282	Pseudolimonene	0.05
17.428	Phellandrene <alpha->	0.08
18.101	Terpinene <alpha->	0.16
18.604	Cymene<para->	0.73
18.929	Limonene	4.73
19.182	1,8-cineole	27.34
19.276	Ocimene<(Z)-beta->	0.14
19.976	Ocimene<(E)-beta->	0.09
20.803	Terpinene<gamma->	0.52
21.621	Sabinene hydrate <cis>	0.16
22.640	Terpinolene	0.31
23.612	Linalool	1.63
23.735	Sabinene hydrate<trans->	0.05
23.844	Hotrienol	0.02
24.905	Thujone<trans->	0.03
25.523	Campholenal<alpha->	0.06
26.512	Sabinol<E>	0.91
27.095	Camphor	27.42
27.530	Terpineol <E-beta>	0.03
28.568	Terpineol <delta>	0.18
28.709	Borneol	2.22
29.127	1,8-menthadien-4-ol <para>	0.03
29.278	Terpinen-4-ol	0.45
29.697	Cymen-8-ol<para->	0.04
30.287	Terpineol <alpha>	0.62
33.212	Neral	0.03
33.987	Linalyl acetate	2.66
35.239	Geranial	0.03
36.395	Bornyl acetate	0.95
36.659	Sabinyl acetate<trans->	2.50
37.632	Spanish Sage	0.03
38.320	Terpinyl acetate <delta>	0.03
39.583	Pipertiol acetate<Z>	0.02
40.524	Terpinyl acetate<alpha->	0.79
41.276	Neryl acetate	0.04
42.446	Isobornyl propanoate	0.12
42.560	Geranyl acetate	0.23
44.511	Gerjunene <alpha->	0.05
45.311	Caryophyllene <trans>	0.90
47.565	Humulene <alpha>	0.30
48.328	Geranyl propionate	0.44
50.038	Bicyclogermacrene	0.14
50.714	Geranyl isobutanoate	0.03
51.098	Amorphene <delta>	0.03
51.391	Cadinene <delta>	0.09
54.895	Spathulenol	0.09
55.215	Caryophyllene oxide	0.11
55.948	Globulol	0.11
56.440	Geranyl isovalerate	0.02
56.843	Humulene epoxide II	0.02
		100.00



Comments:
 The analysis of this Spanish sage batch sample meets the expected chemical profile of authentic essential oil of Spanish sage.

Copyright © 2018 by Aromatic Plant Research Center (APRC). All rights reserved.
 The information contained in this document may not be used, published or redistributed, including online, without the prior written consent of APRC.

AROMATIC PLANT RESEARCH CENTER PHYSICAL CONSTANTS REPORT

Oil Name: Spanish Sage

Botanical Name: *Salvia lavandulifolia* Vahl

Lot #: 32096C

Organoleptic Information	
Appearance	Liquid
Color	Pale yellow
Odour	Herbaceous, camphor note

Physical Constants Information – at 20 °C			
Tests	Observed	ISO 3526:2005(E)	Comments
Specific Gravity	0.91717	Not available	This fits within the range of APRC spec
Refractive Index	1.46848	1.4650 to 1.4730	
Optical Rotation	+13.40	+7 to +17	

Comments: The ISO information for specific gravity is not available for Spanish Sage, however, it fits within APRC Specifications for Sage oil. All else falls within both APRC and ISO ranges for this oil.

Reviewed by: Sophia Wax

Date: 10/23/2018