



APRC
Aromatic Plant Research Center

LABORATORY REPORT

SAMPLE NAME: Greek Sage

BOTANICAL NAME: *Salvia triloba*

COMPANY NAME: ACHS

COMPANY LOT #: 33097C

Column: ZB5 (60 m length × 0.25 mm inner diameter × 0.25 μm film thickness)

Instrument: Shimadzu GCMS-QP2010 Ultra

Carrier gas: Helium 80 psi

Temperature ramp: 2 degrees Celsius per minute up to 260-degree Celsius

Split ratio: 30:1

Sample preparation: 5% w/v solution with Dichloromethane

Interpretation on sample:

This oil meets the standard profile of *Salvia triloba*.

Analyzed by: Dr. Prabodh Satyal

Reviewed by: Ambika Poudel

Issued Date: 11/1/2018

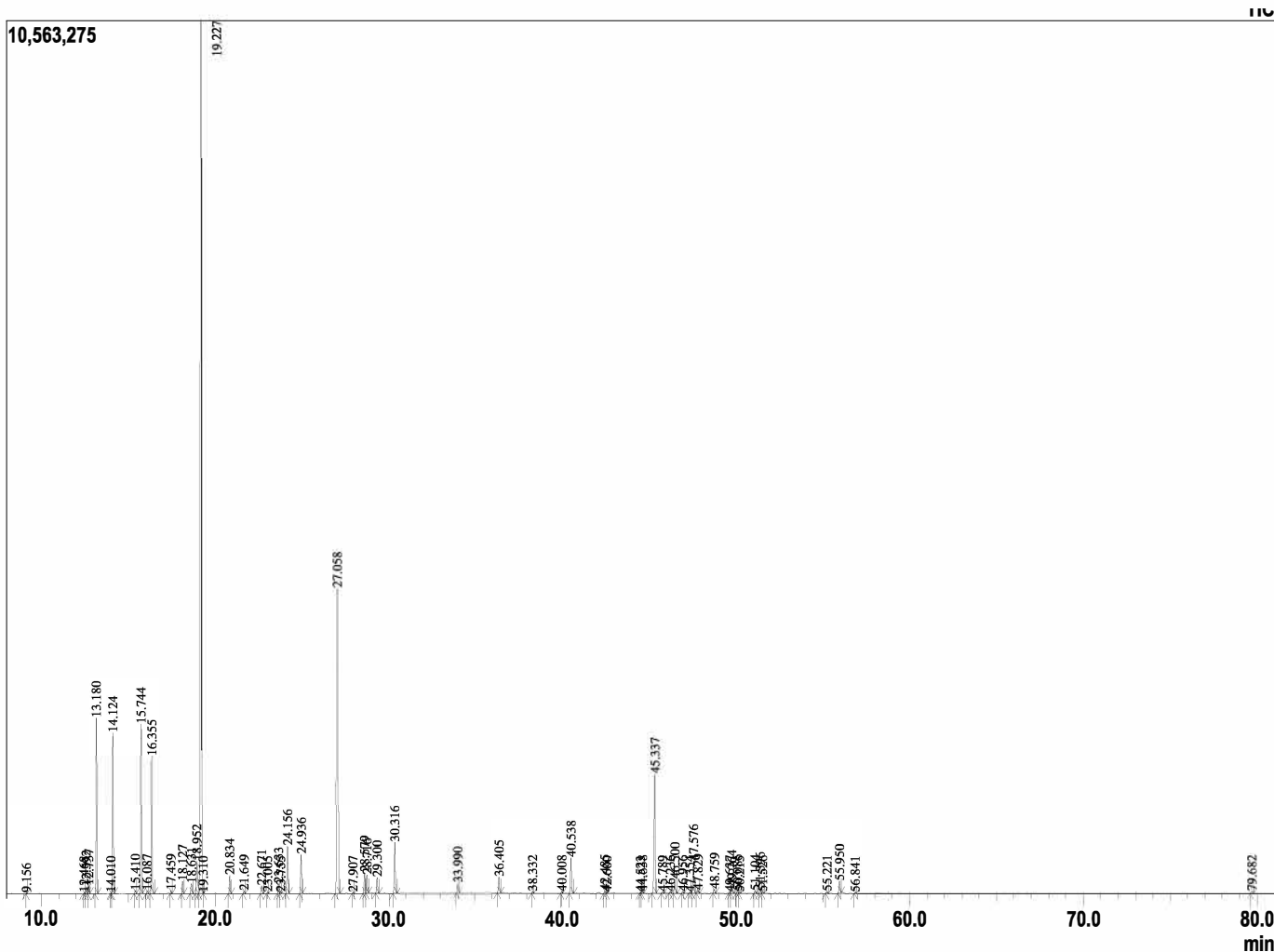
Analyzed by : Dr. Prabodh Satyal
 Analyzed : 11/1/2018 4:57:32 AM
 Sample Type : Essential Oil
 Sample Name : Greek Sage
 Lot# : 33097C
 Injection Volume : 0.10

Sample Information



Peak Report TIC

R.Time	Name	Area%
9.156	Salvene<Z->	0.01
12.468	Pinene isomer	0.03
12.592	Tricyclene	0.19
12.737	Thujene<alpha->	0.23
13.180	Pinene<alpha->	5.00
14.010	Fenchene<alpha->	0.02
14.124	Camphene	4.70
15.410	Sabinene	0.09
15.744	Pinene<beta->	5.26
16.087	Octanone<3->	0.09
16.355	Myrcene	4.25
17.459	Phellandrene<alpha->	0.10
18.127	Terpinene <alpha->	0.39
18.631	Cymene<para->	0.37
18.952	Limonene	1.60
19.227	Cineole<1,8->	43.38
19.310	Ocimene<(Z)-beta->	0.01
20.834	Terpinene<gamma->	0.61
21.649	Sabinene hydrate<cis->	0.10
22.671	Terpinolene	0.28
23.005	Cymenene<para->	0.03
23.633	Linalool	0.34
23.755	Sabinene hydrate<trans->	0.03
24.156	Thujone<cis->	1.72
24.936	Thujone<trans->	1.38
27.058	Camphor	14.13
27.907	Pinocamphone<trans->	0.03
28.579	Terpineol <delta>	0.75
28.716	Borneol	0.68
29.300	Terpinen-4-ol	0.59
30.316	Terpineol<alpha->	1.94
33.990	Linalyl acetate	0.38
36.405	Bornyl acetate	0.60
38.332	delta-Terpinyl acetate	0.06
40.008	Pinanediol<2,3>	0.05
40.538	Terpinyl acetate<alpha->	1.42
42.485	Copaene <alpha>	0.09
42.600	Geranyl acetate	0.03
44.523	Gurjunene <alpha>	0.03
44.638	Pacifigorgia-1(6),10-diene	0.06
45.337	Caryophyllene <trans->	5.12
45.789	Caryophyllene <9-epi-cis->	0.05
46.236	Maaliene <alpha->	0.06
46.500	Aromadendrene	0.56
46.956	Selina5,11-diene	0.06
47.354	Alloaromadendrene	0.04
47.576	Humulene <alpha>	1.30
47.829	Muuroldiene <cis>	0.12
48.759	Cadina-1(6),4-diene <trans->	0.16
49.637	Guaia-1(10),11-diene	0.05
49.764	Viridiflorene	0.30
50.086	Epizonarene	0.08
50.215	Muurolene <alpha>	0.03
51.104	Amorphene <delta>	0.09
51.396	Cadinene <delta>	0.19
51.526	Calamenene<trans->	0.06
55.221	Caryophyllene oxide	0.07
55.950	Viridiflorol	0.50
56.841	Humulene epoxide II	0.02
79.682	Manool	0.09
		100.00



Copyright © 2018 by Aromatic Plant Research Center (APRC). All rights reserved. The information contained in this document may not be used, published or redistributed, including online, without the prior written consent of APRC.

Reviewed by: Ambika Poudel

AROMATIC PLANT RESEARCH CENTER PHYSICAL CONSTANTS REPORT

Oil Name: Greek Sage

Botanical Name: *Salvia triloba*

Lot #: 33097C

Organoleptic Information	
Appearance	Liquid
Color	Colorless
Odour	Herbaceous, pungent, camphor notes

Physical Constants Information – at 20 °C	
Tests	Observed
Specific Gravity	0.99099
Refractive Index	1.46770
Optical Rotation	-4.24

Comments:

Reviewed by: Sophia Wax

Date: 10/29/2018